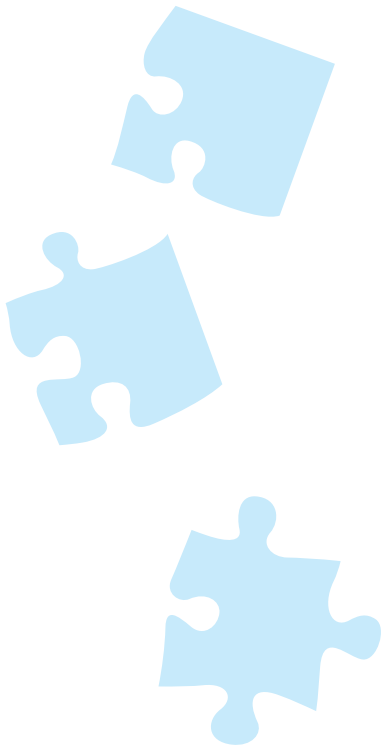




## Company Information (As of March 31, 2021)

Company name	Nippon Pillar Packing Co., Ltd.
Headquarters address	7-1, Shinmachi 1-chome, Nishi-ku, Osaka 550-0013, Japan
Establishment	1924
Representative	President Yoshinobu Iwanami
Capital	¥4,966 million
Listed stock exchange	First Section, Tokyo Stock Exchange
Total number of shares	25,042,406 shares
Number of stockholders	13,792
Number of employees	759 (consolidated)
Main products	Fluororesin products, bearing products, new ceramic products, mechanical seals, gland packing, gaskets
URL	<a href="https://www.pillar.co.jp/en/">https://www.pillar.co.jp/en/</a>



## **NIPPON PILLAR PACKING CO., LTD.**

7-1, Shinmachi 1-chome, Nishi-ku, Osaka 550-0013, Japan  
<https://www.pillar.co.jp/en/>